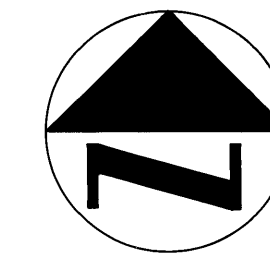


PLAT NO. 1A SAILFISH POINT P.U.D.

OCTOBER 1980

BEING A RE-PLAT OF A PORTION OF
 PLAT NO. 1 SAILFISH POINT P.U.D.
 AS RECORDED IN PLAT BOOK 8 AT PAGE 10 OF
 THE PUBLIC RECORDS OF MARTIN COUNTY, FLORIDA.
 TOGETHER WITH AN UNPLATTED PORTION OF SAILFISH POINT P.U.D.
 LYING IN PART OF FRACTIONAL SECTION 8, TOWNSHIP 38 SOUTH, RANGE 42 EAST
 MARTIN COUNTY, FLORIDA.

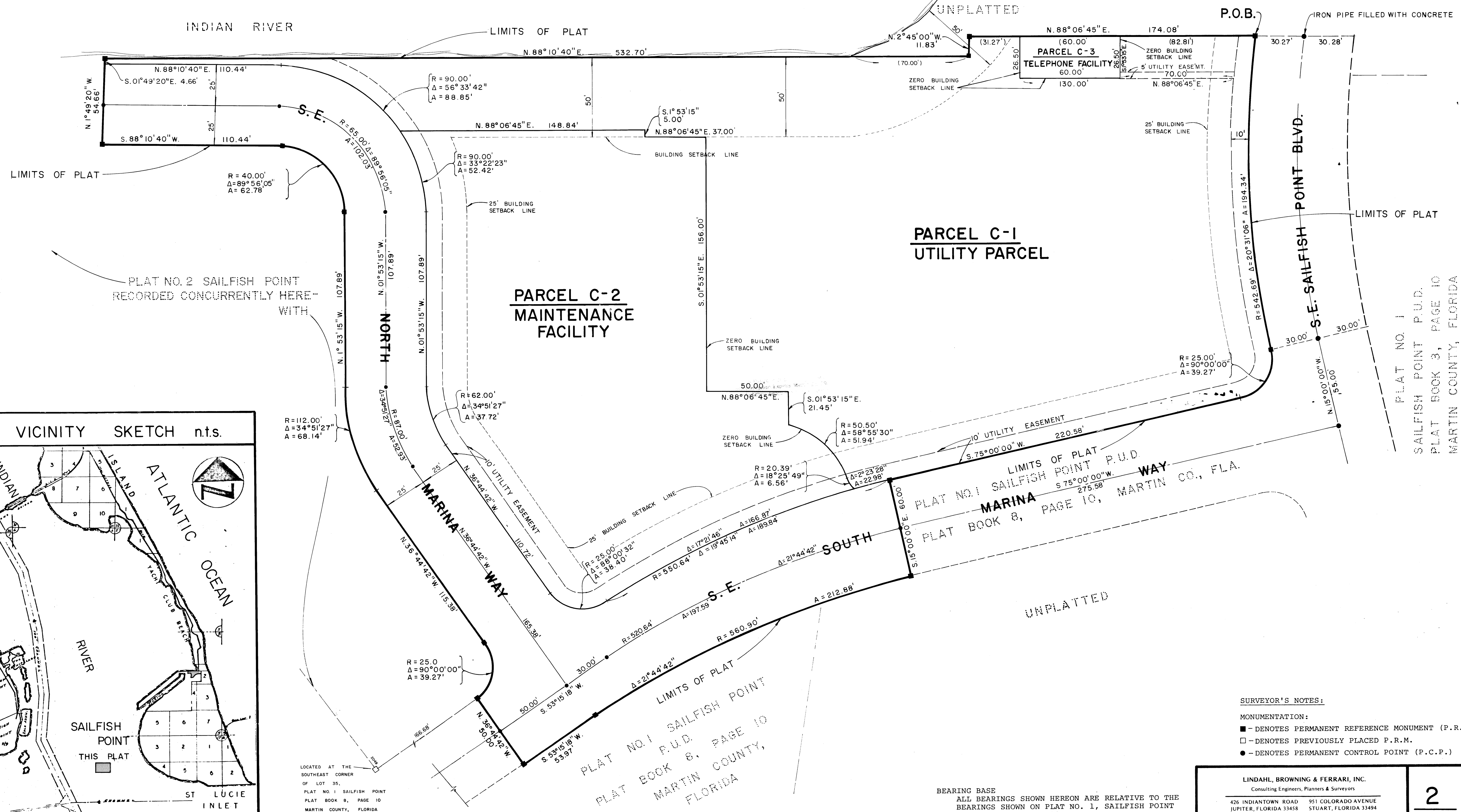


I, LOUISE V. ISAACS,
 CLERK OF THE CIRCUIT
 COURT OF MARTIN COUNTY,
 FLORIDA, HEREBY CERTIFY
 THAT THIS PLAT WAS FILED
 FOR RECORD IN PLAT BOOK
 8 PAGE 47 MARTIN
 COUNTY, FLORIDA, PUBLIC
 RECORDS, THIS DAY
 OF 1980.

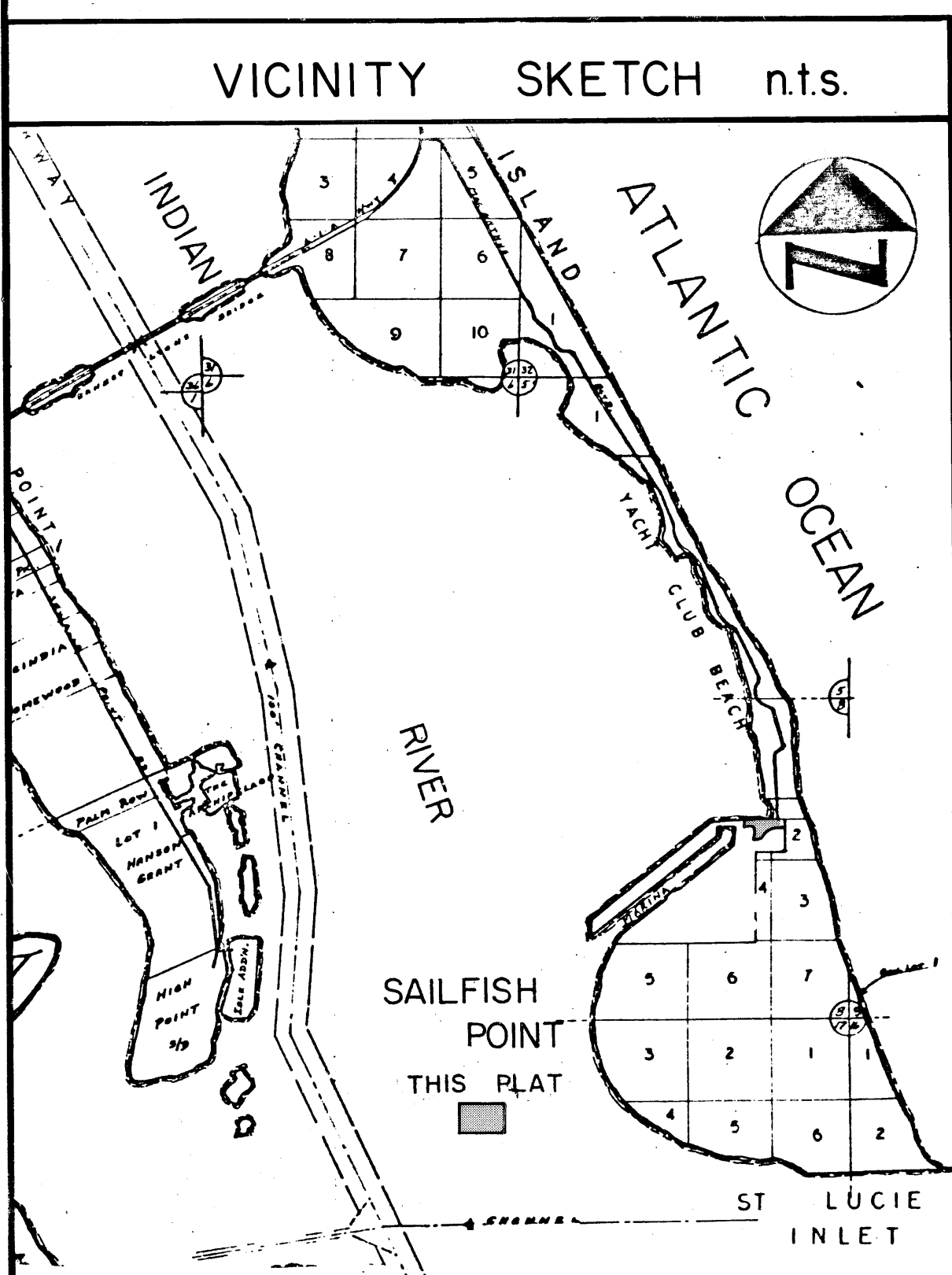
LOUISE V. ISAACS, CLERK
 CIRCUIT COURT
 MARTIN COUNTY, FLORIDA

BY: _____

FILE NO. _____



PLAT NO. 2 SAILFISH POINT
 RECORDED CONCURRENTLY HERE
 WITH



- SURVEYOR'S NOTES:**
- MONUMENTATION:**
- - DENOTES PERMANENT REFERENCE MONUMENT (P.R.M.)
 - - DENOTES PREVIOUSLY PLACED P.R.M.
 - - DENOTES PERMANENT CONTROL POINT (P.C.P.)

LINDAHL, BROWNING & FERRARI, INC.
 Consulting Engineers, Planners & Surveyors
 426 INDIANTOWN ROAD JUPITER, FLORIDA 33458
 951 COLORADO AVENUE STUART, FLORIDA 33494